

RHUG Intro and Agenda

Agenda

- ▶ Introductions & Announcements
 - Richard Hofmeister
- ▶ Summit & AnsibleFest Recap
 - Richard Hofmeister
- ▶ Ansible Developer Tools
 - Brad Krumme
- ▶ OpenShift Virtualization
 - Brian Dumont

Platform Release Schedule

All Dates Subject to Change

- ▶ OpenShift 4.14 : Q4 2023
- ▶ HyperShift 1.0 : Q3 2023
- ▶ RHACM 2.8 : Q2 2023
- ▶ RHACS 4.1 : Q3 2023
- ▶ Satellite 6.14 : Q4 2023
- ▶ AAP 2.4 : Q3 2023

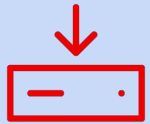
Middleware Release Schedule

All Dates Subject to Change

- ▶ 3scale 2.14 : Q3 2023
- ▶ Fuse 7.12 : Q3 2023
- ▶ Camel Quarkus 3.2 : Q3 2023
- ▶ Migration Toolkit for Applications 6.2 : Q3 2023
- ▶ Migration Toolkit for Virtualization 2.5 : Q3 2023
- ▶ Enterprise Application Platform XP 5 : Q4 2023
- ▶ Red Hat Build of Keycloak 22 : Q3 2023
- ▶ Red Hat Build of Quarkus 3 : Q3 2023
- ▶ Enterprise Application Platform 8.0 : Q4 2023

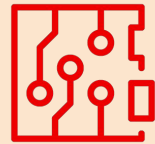
OpenShift 4.13

OPERATIONAL



3 Node Cluster Support in AWS,
Azure, GCP and vSphere
Single Click Scale of Control
Plane (Azure, GCP)

CORE



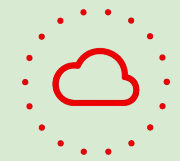
Custom Metric Auto
Scaler
Cgroups v2
Kubernetes 1.26

SECURITY



Cert-manager operator is GA
Deploy OpenShift on
encrypted VMs and encrypted
storage in vSphere
User managed key to encrypt
storage on AWS, Azure, and
GCP

EDGE



Single Node OpenShift on
AWS and Arm bare metal
LVM Storage resource
optimization
crun is GA



Introducing Podman Desktop

Containers and Kubernetes for Application Developers

Podman and Kubernetes/OpenShift Local

- Install and run anywhere: Windows, Mac and Linux
- Keep it up-to-date

Containers and Pods

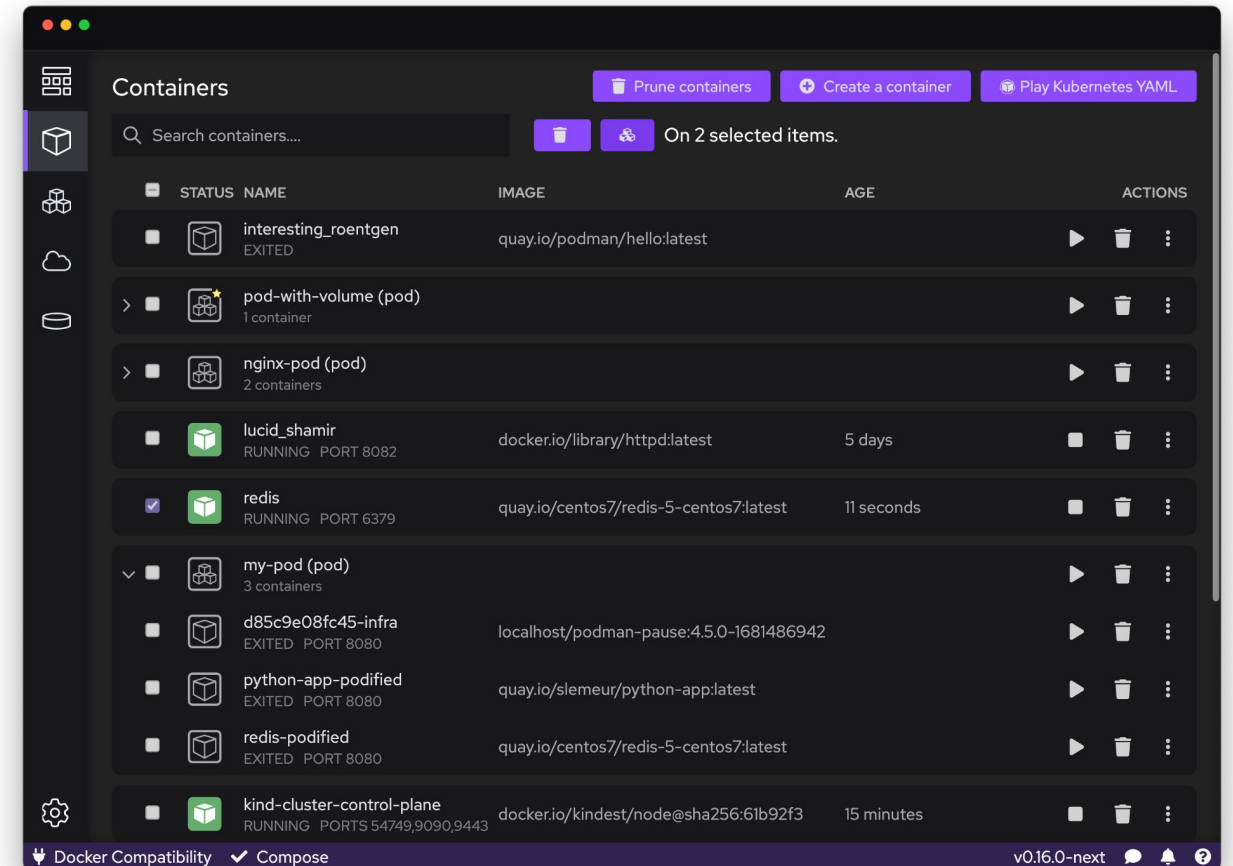
- Build, run, manage and debug Containers and Pods
- Run Pods with or without Kubernetes
- Manage multiple container Engines
- Compatibility with Docker Compose

Enterprise Readiness

- VPN and Proxies configuration
- Image registry management
- AirGapped Installation

Bridge between local and remote

- Connect and deploy to remote OpenShift clusters
- Enable remote managed services locally



Migration Toolkit for Applications 6.1

Application Migration Made Easier



Custom Migration Targets

- Encapsulate custom rules for analysis configuration
- Simplify analysis configuration and execution
- Manage custom target from the administration perspective
- Consume custom targets from the analysis configuration wizard
- Streamline knowledge sharing abstracting migration teams from the complexity

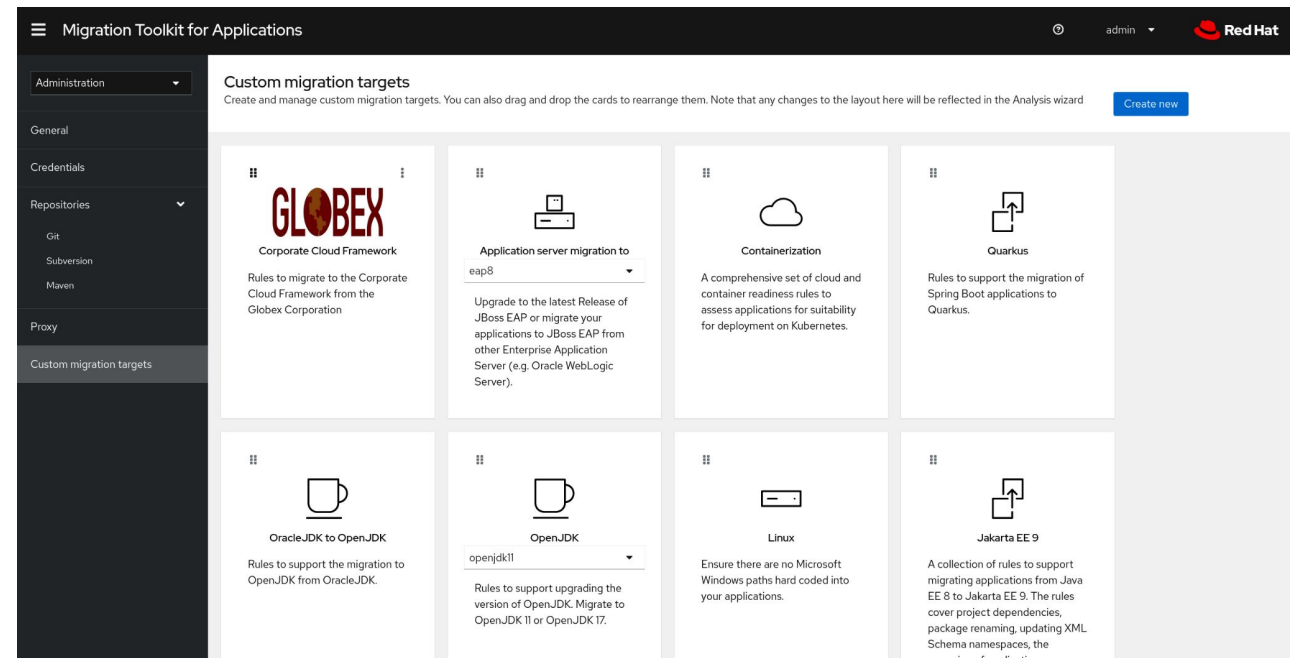
Enhanced Application Profile

- A smarter way to store and browse information about applications
- Manage tags coming from multiple sources at scale

Automated Tagging of Applications

- Extracted metadata about applications from the analysis execution

Downloadable Reports and Disconnected Installs



Red Hat Advanced Cluster Security for Kubernetes 4.0

A cloud workload protection platform and cloud security posture management to enable you to “shift left”

The screenshot displays the Red Hat Advanced Cluster Security for Kubernetes interface. The left sidebar contains navigation options: Dashboard, Network Graph, Violations, Compliance, Vulnerability Management (highlighted), Configuration Management, Risk, and Platform Configuration. The main content area shows a table of CVEs with columns for CVE ID, Type, Fixable status, CVSS Score, Env. Impact, Impact Score, Entities, Discovered Time, and Published. The table lists several CVEs, including CVE-2005-2541 (Image CVE, CVSS 10.0), CVE-2019-17133 (Node CVE, CVSS 9.8), CVE-2019-18805 (Node CVE, Fixable, CVSS 9.8), CVE-2019-15504 (Node CVE, CVSS 9.8), and CVE-2019-16746 (Node CVE, CVSS 9.8). Each entry includes a brief description of the vulnerability and its impact.

CVE	Type	Fixable	CVSS Score	Env. Impact	Impact Score	Entities	Discovered Time	Published
CVE-2005-2541	Image CVE	No	10.0 (V2)	13% affected	10.0	2 deployments, 2 images, 1 component	04/27/2021 8:45:27AM	08/10/2005 12:00:00AM
CVE-2019-17133	Node CVE	No	9.8 (V3)	100% affected	5.9	1 component	04/27/2021 8:45:02AM	10/04/2019 8:15:00AM
CVE-2019-18805	Node CVE	Fixable	9.8 (V3)	100% affected	5.9	1 component	04/27/2021 8:45:02AM	11/07/2019 9:15:00AM
CVE-2019-15504	Node CVE	No	9.8 (V3)	100% affected	5.9	1 component	04/27/2021 8:45:02AM	08/23/2019 2:15:00AM
CVE-2019-16746	Node CVE	No	9.8 (V3)	100% affected	5.9	1 component	04/27/2021 8:45:02AM	09/24/2019 2:15:00AM

- ▶ Move to PostgreSQL for performance and scaling
- ▶ RHACSS Cloud Service Limited Availability
- ▶ RHCOS node host scanning for security vulnerabilities
- ▶ No provides a list of all processes that are listening on ports in secured clusters
- ▶ FIPS compliance
- ▶ Automatic notification process for API tokens expiring

Key Lifecycle Milestones



CentOS Linux 7
End of Life

June 30th, 2024



CentOS Stream 8
End of Builds

May 31st, 2024



Red Hat Enterprise Linux 6
End of ELS Support

June 30, 2024



Red Hat Enterprise Linux 7
End of Maintenance

June 30, 2024

Will require ELS Add-on



Red Hat Enterprise Linux 8
Start of Maintenance

May 31, 2024

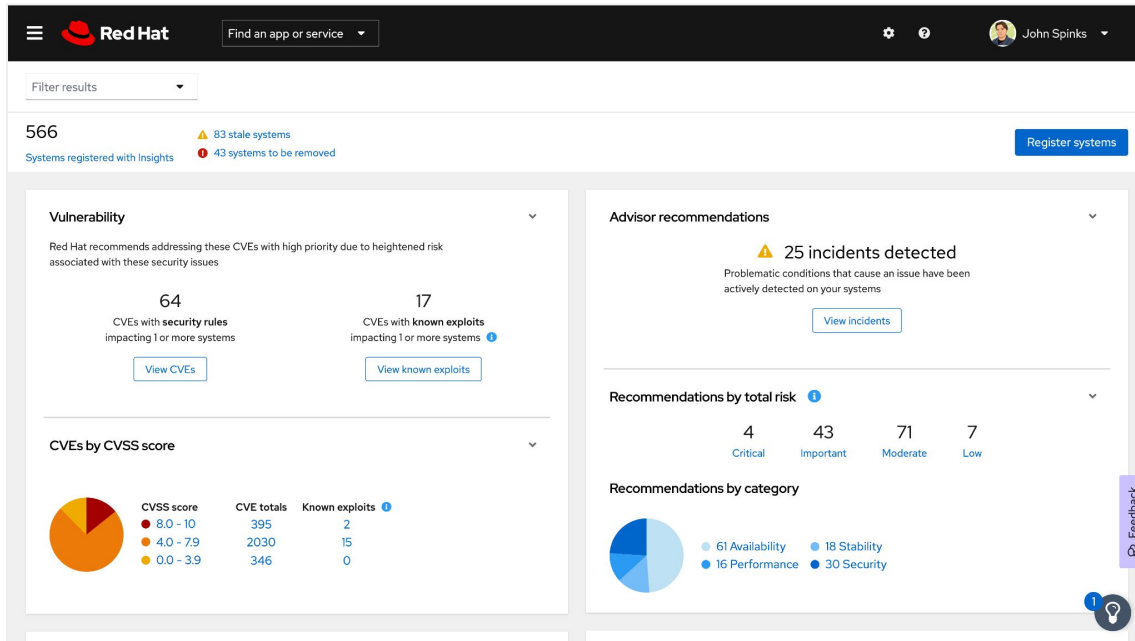


Red Hat Enterprise Linux 9
End of Full Support

May 31, 2027

Red Hat Insights

What's new for 2023-Q2



- ▶ Advisor - Edge and containers specific recommendations including detection of EOL products within running containers
- ▶ Resource Optimization - updated executive report & historical data
- ▶ Subscriptions - support added for RHEL VDC
- ▶ Task for RHEL preupgrade analysis
- ▶ Hybrid Cloud Console -
 - ServiceNow, Slack, and Splunk integrations are GA
 - New Identity and Access Management menu
 - New Services drop down with search and the ability to favorite services

RED.HT/MI-RHUG



Richard Hofmeister

Senior App Dev Solutions Architect :: hofmeister@redhat.com :: 517-927-6303

LinkedIn :: [Richard Hofmeister](#)

Quarter	Speaker	Topic	Slide Deck
Q4 - 2022	Richard Hofmeister	Agenda	pdf
	Brian Dumont	Using the Insights API to apply Compliance Profiles	pdf
	Richard Hofmeister	Application Modernization With Konveyor	pdf
	Patrick Regan	What's New in RHEL 9	pdf
	Brad Krumme	Enterprise Architecture Patterns	pdf
Quarter	Speaker	Topic	Slide Deck
Q3 - 2022	Brian Dumont	Enterprise Automation	pdf
	Alan Patrick	Red Hat Satellite	pdf
	Jay Ryan	Managing Complex Workloads in a Kubernetes Native Environment	pdf
	David Brugger	Empowering Event Driven Architectures Across the Hybrid Cloud	pdf
	Andy Block	Introduction to GitOps and Secrets Management	pdf